



Organize

Develop designs and create documentation within teams

Store

Centrally store all your project data

Interact

Easily exchange documents between staff and customers

Pilot-ICE — the next generation for managing and organizing your design data.

Our Pilot-ICE system is suited for all sizes of design organizations, such as architect offices, project bureaus, and the design departments of industrial enterprises.

The benefits of Pilot-ICE apply to any size of design firm:

- Seamlessly integrates into your company's existing IT structure.
- Immediately ready to work following installation.
- Productive even on unreliable network infrastructures with slow data access; even works when offline.
- Easy in use with no encumbrances imposed on personnel.
- Highly scalable in handling an unlimited numbers of workstations.
- Low cost of ownership with no hidden costs and no need for purchase or administer a DBMS (database management system).
- Direct technical support from the developers; always updated to the most recent version of the system.

Pilot-ICE for data management, analysis, and storage

- Coordinates team members in developing design documentation and cost estimates
- Compatible with all CAD systems, costing systems, text notes, and other file formats, such as images, audio, and video.
- Manages the design organization's intellectual property in-house.
- Implements project planning and management.
- Reports on project implementations and activities by department and employee.
- Coordinates with contractors and customers.
- Performs visual searches using geometric shapes.

Install and use Pilot-ICE free of charge!*

Keeps data safe from permanent loss.

Processes data at high speed on files of any format or size; data is loaded into the system only when needed.

Works with any CAD package, analysis or estimation system, text documents and other files, such as images, audio, and video.

Works with document versioning, keeping track of change history, while securing documents with electronic signatures.

* Applies to 2-user mode only.

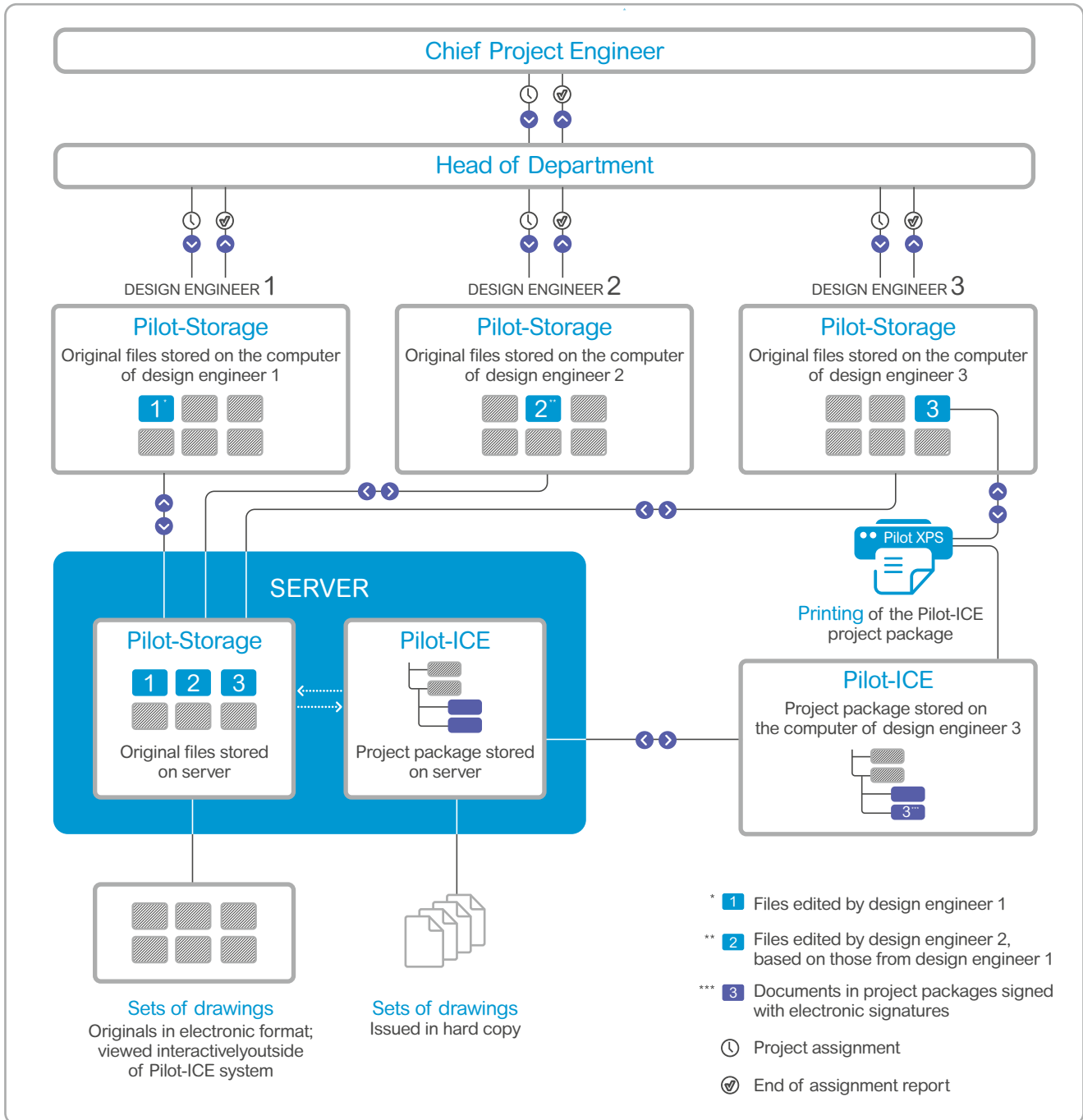
Unique technologies will help to save and to organize the information, to analyze data and to establish the interaction between employees and with the third party companies: customers, contractors, services for export examination of design documents, etc.

NoSQL — high-speed processing of large data volumes.

Push-notices on changes made.

Synchronized Cache — total caching and productive teamwork in the unreliable network infrastructure, poor public access channels up to offline.

Diff-Geometry — visual comparison of versions of text and graphic documents.

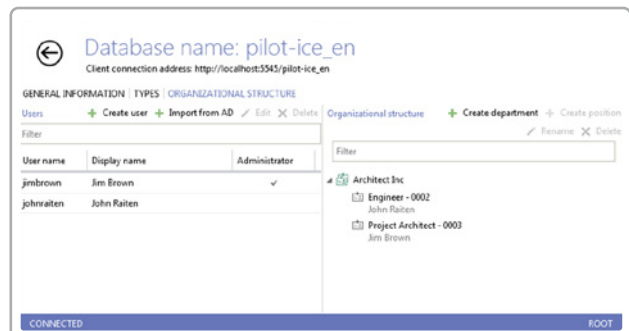


Structure of teamwork and electronic archiving

Server Operation

Pilot-Server is the core of the system, containing smart logic to make it very easy for users and administrators to use. The server can be installed on any computer, to which any other computer is connected through the local network or Internet.

Pilot-myAdmin is the database management program, providing fast and easy database configuration. To log in users, designate an administrator who then installs the licenses.



User logging with Pilot-myAdmin

System Requirements

	Server Side	Client Side
Operating Systems	Windows 7 Service Pack, Windows 8.1., Windows Server 2008 or later	Windows XP, Windows 7 SP1, Windows 8.1 or later
Processor	32-bit (x86) or 64-bit (x64) with clock speed of 1GHz or more	
Memory	2GB or more	
Hard Disk Free Space	2.2GB or more	

Benefits

- SQLite is integrated into Pilot-Server, a DBMS that is noted for its fast response; no further expenses in purchasing or administrating a DBMS.
- Secure storage; scalable to a very large number of users working with large amounts of data.
- Maintains high speed system operation by performing regular load tests of the system with large data volumes.
- Easy installation and setup.
- Fast system startup.
- Records database changes and updates of users' data immediately.

Pilot-ICE

Works with Original Files

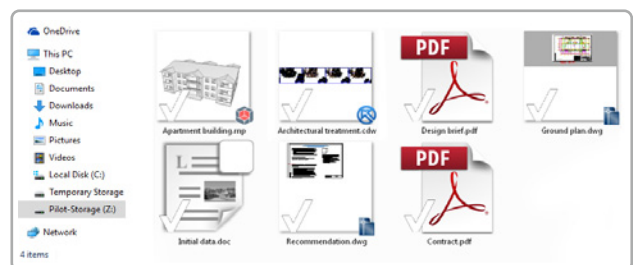
Accepts files in any format, such as doc, dwg, cdw, and xls (list subject to change).

Works with Electronic Documents

Electronic documents are saved in Microsoft's non-editable XPS format, and so is protected from change.

Pilot-Storage — Works with Original Drawing and Model Files, Analysis Data

- Stores all project information, such as drawings, calculation data, object models, explanatory notes, photos and video records, and geological surveys.
- Provides teams with safe, high-speed access to files
- Connects as a virtual disk during system installation
- Users access files through the Explorer, with every assigned file stored on the server and managed by Pilot-ICE



Files stored on the Pilot-Storage drive

Teamwork Tools:

- Supports design technology end-to-end.
- Alerts all team members to file changes, as well as changes made to referenced files.
- Versioning permits use of different versions of the same file.

Benefits:

- Ordered structure of folders and files.
- Processes large data volumes at high speed.
- Reduces traffic while providing instant access to even large files; data protected through permissions management and storage on servers.
- Information design engineers require always close at hand.

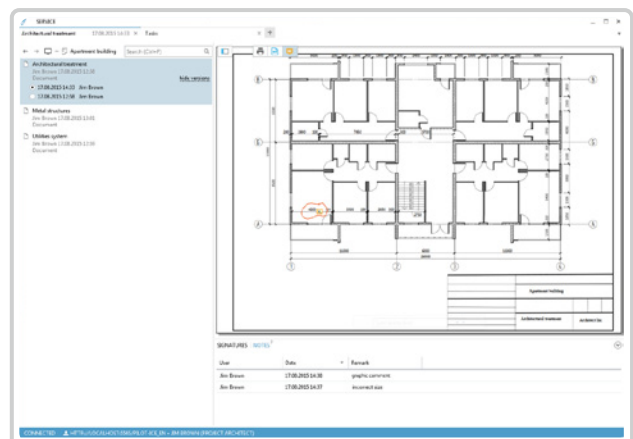
Works with Electronic Documents

Establishing Project Packages:

- Creates electronic documents from editable files using the PilotXPS virtual printer; the output is electronic documents in non-editable XPS* format.
- * XML Paper Specification © Microsoft (XPS): supported at the operating system level, may be electronically signed and annotated free of charge.
- Fast file loading of the project's files in the following formats: XPS, DWFX, PDF, JPEG, TIFF, PNG, and BMP.
- Creates project packages in accordance with legislation issued by the Russian Federation.

Pilot-ICE Resources:

- Reviews e-documents independent of the design engineer's tools.
- Places comments in documents.
- Approval of e-documents; roles specified when digital signatures are used.
- Compares versions of the same and different documents, automatically or manually.



Works with Electronic Documents

Performs Project and Task Management

Task management sets tasks and then monitors the performance over time.

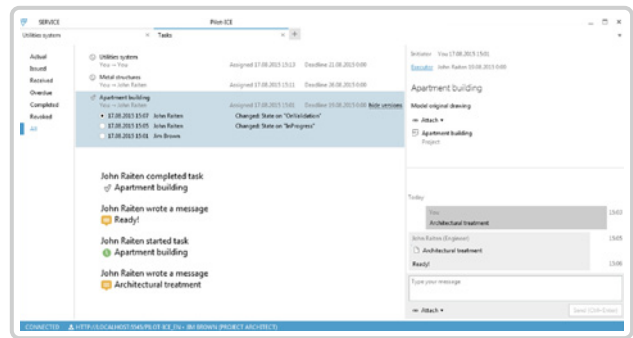
- Establishes full lists of tasks.
- Selects contractors and sets deadlines.
- Attaches files and documents.
- Records written communication for each task.
- Reports on the progress of work of each task, such as assigned, in-process, and under review.
- Edits task history.

Document approval tasks

- Divides the approval process by stages, such as parallel or consecutive.
- Allocates roles with requests for electronic signatures, such as developed, checked, and approved.

Benefits:

- Simplifies packaging and issuing of design documents.
- Speeds document transmission to customer by emailing them as XPS documents with electronic signatures or saved to disk.
- Creates archives of originals electronically by preserving the change history; directly archives files without any additional effort by personnel.
- Protects accidental data deletion, such as due to changes made when jointly working with documents or when preparing the most-recent version to be issued.
- Fully operational even with the loss of the local network or Internet; data instantly updates as soon as the connection to the server is restored.
- Legally valid e-document flow secured by using qualified electronic signatures (according to the 63-FZ standard) both inside the organization and externally with customers and clients.



Working with tasks

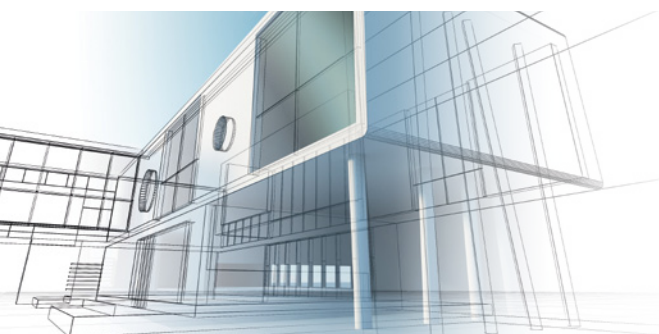
A reliable tool for design engineers

- Easily work on projects jointly
- Keep projects safe, maintain project integrity
- Track and record design efforts, share best practices
- Communicate rapidly with team members



Project manager's dashboard

- Real-time project management monitoring
- Faster agreements over design elements
- Simpler procedures for cost estimating
- Minimize errors and disagreements between departments
- Easier coordination with contractors and customers



Executive control panel

- Information safekeeping and intellectual property management
- Project evaluation and cost reduction
- Improved quality of issued projects
- Superior design culture

